

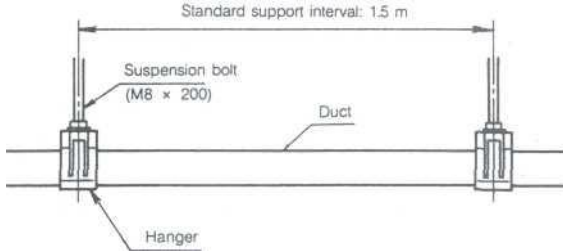
Factory Line 30

Hanger installation

The hangers should be installed at a standard interval of 1.5 m. Secure the suspension bolts firmly to a structural member.

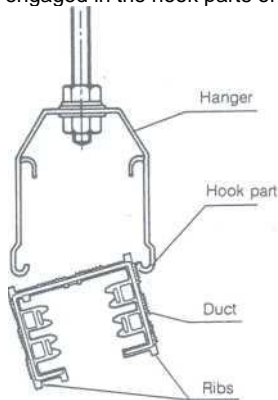
Note

When using long suspension bolts, install braces to prevent swinging. Align the centers of the hangers so that the ducts do not snake.



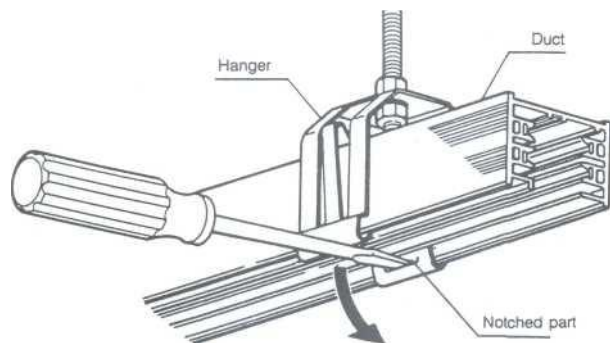
• Installation of the ducts

Use the corner of the top of the duct to spread open the hook parts of the hanger, then push the duct into the hanger until the ribs of the duct are engaged in the hook parts of the hanger.



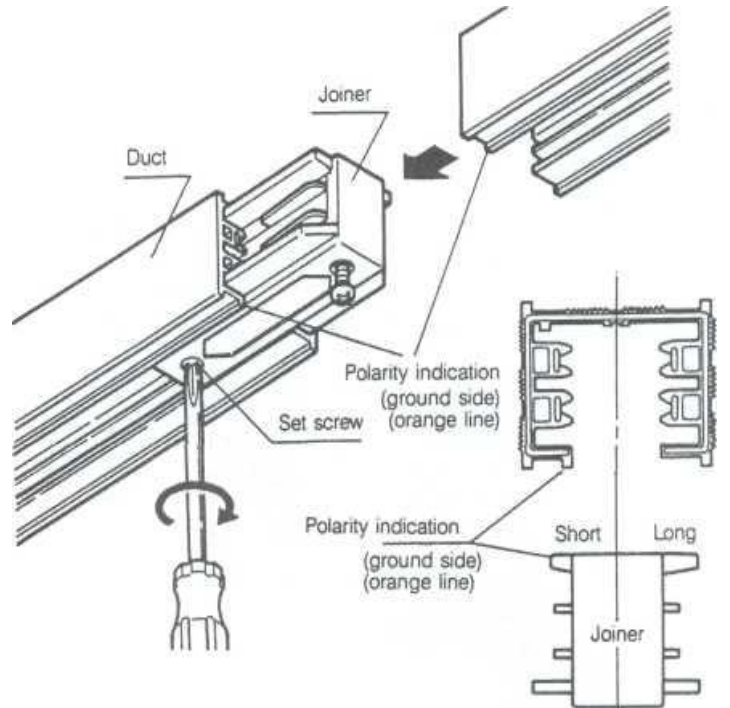
• Removal of the hangers

Insert the tip of a screwdriver into the notched parts of the hanger and pry downward in the direction indicated by the arrow to disengage the ribs of the duct from the hook parts of the hanger, then pull the duct downward to remove it from the hanger.



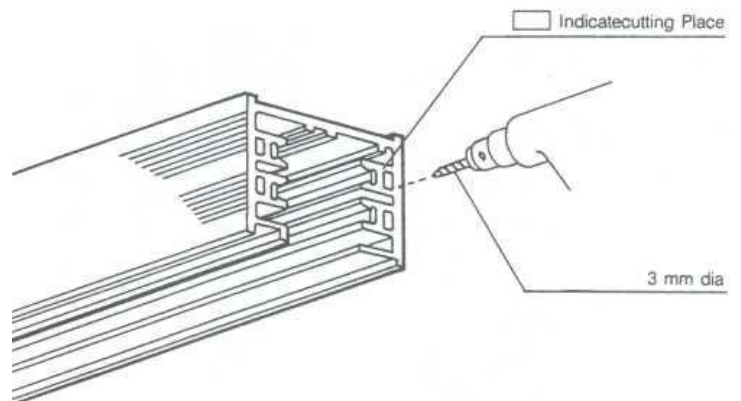
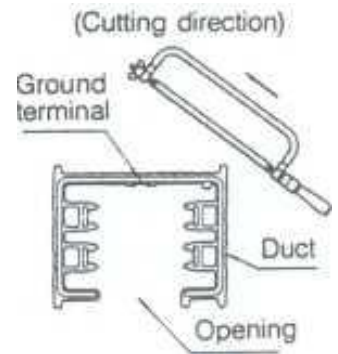
Connecting the ducts

- Use a joiner to connect two ducts.
- Be sure to match the polarities of the ducts and the joiner and secure it by tightening the set screws.



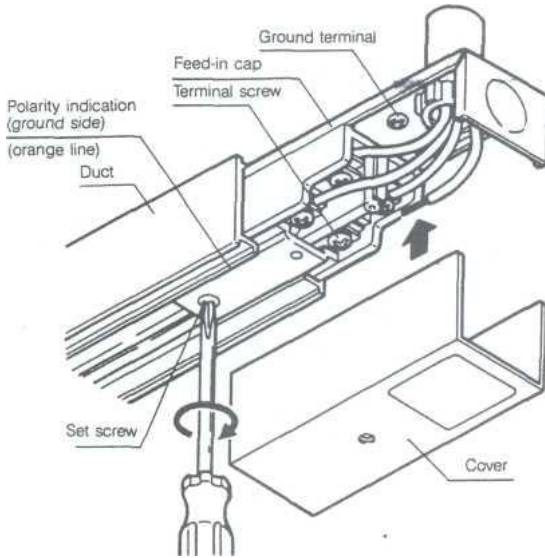
Note

1. Connect the ducts so that they butt securely up against each other.
2. Tighten the set screws securely.
3. Cutting the ducts and edge adjustment.
 - ① When cutting the ducts, use a metal hacksaw (hand type) and cut with the opening in the duct facing downward as shown in the (figure). If a power saw is used, the insulation cladding or ground terminals could be scraped or burned.
 - ② After cutting, if the ground terminal protrudes slightly, correct it.
4. Use a 3-mm diameter drill to cut (depth of 4 to 6 mm) the ribs (eight locations) of the duct.
5. Remove any cutting chips or burrs from the cut surface.



Installing the feed-in cap

- Fit the feed-in cap into the duct and tighten the set screw to secure it.
- Strip just 10 to 12 mm of the insulation from the electrical wires, loosen the terminal screws, insert the end of the wires under the washers, and then tighten terminal screws securely.
- Mount the cover onto the feed-in cap.

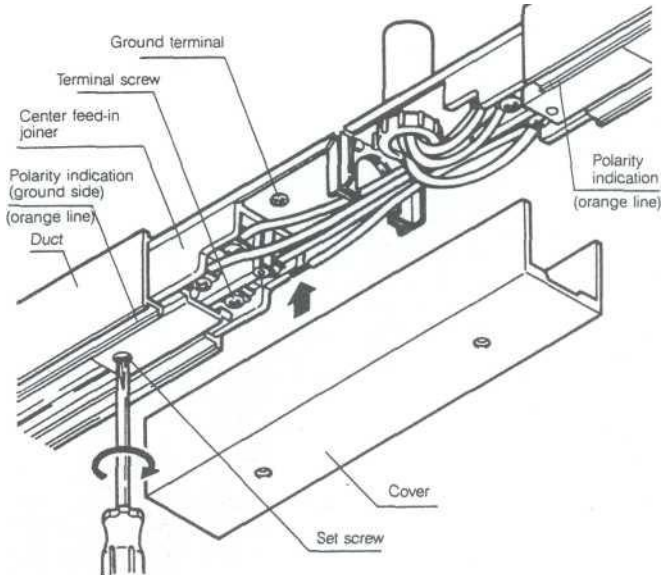


Note

1. When connecting the power supply, be sure that the side of the duct with the polarity indication is the ground side.
2. Use either 1.6 to 2.0-mm² single wire or 3.5 to 5.5-mm² stranded wire for electrical wire.
3. Connect the ground wire to the ground terminal by winding it around the terminal.

Installing a center feed-in joiner

- Being sure to match the polarities, connect the center feed-in joiner to the ducts and secure it by tightening the set screws.
- Strip just 10 to 12 mm of the insulation from the electrical wires, loosen the terminal screws, insert the end of the wires under the washers, and then tighten the terminal screws securely.
- When connecting the electrical wires, be sure that the polarity indication is on the ground side.
- Mount the cover.



Note

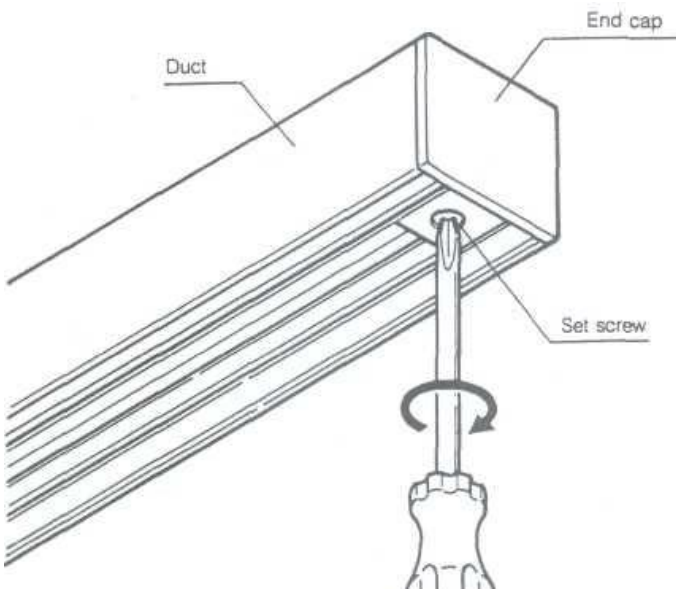
1. Use either 1.6 to 2.0-mm² single wire or 3.5 to 5.5-mm² stranded wire for the electrical wire.
2. Connect the ground wire to the ground terminal by winding it around the terminal.
3. When wiring the power supply wires, use electrical wires of the same size.

Attaching the end cap

Fit the end cap onto the end of the duct and secure it by tightening the set screw.

Note

An end cap must be mounted onto the end of the duct



Mounting an electrical outlet plug

• Mounting

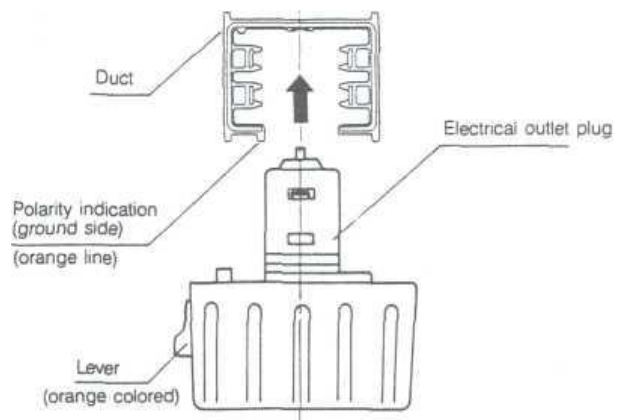
Insert the lever (orange) on the plug in agreement with the polarity indication (orange line) on the duct, then turn it to the right 90°.

• Removal

Pull down the lever on the plug, then turn it to the left 90°

Note

Cannot be used on Factory Line 100.



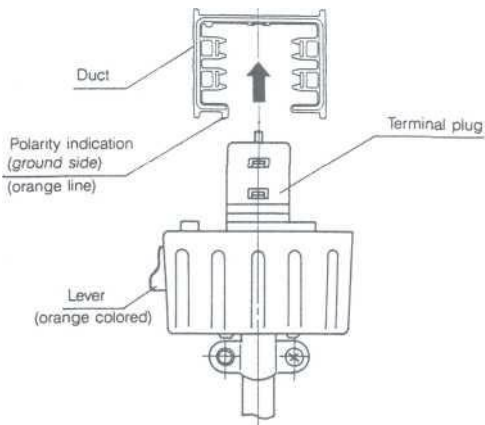
Mounting a terminal plug

● Mounting

Insert the lever (orange) on the plug in agreement with the polarity indication (orange line) on the duct, then turn it to the right 90°.

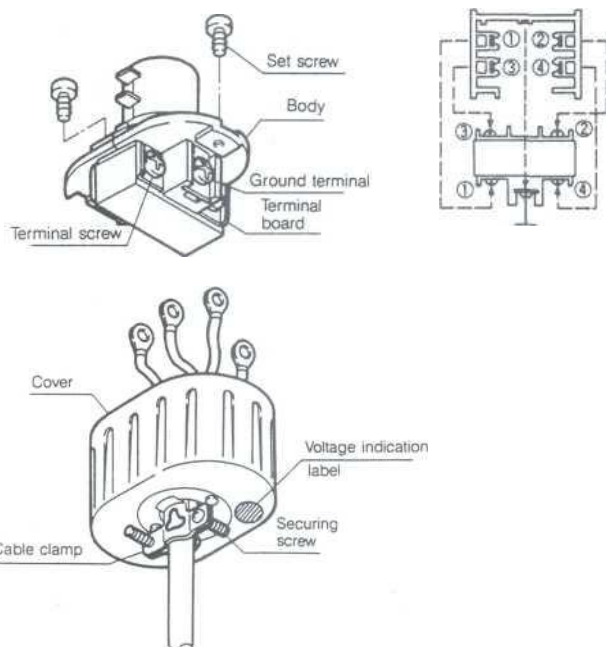
● Removal

Pull down the lever on the plug, then turn it to the left 90°.



● Connection of the electrical wires

- Remove the set screws to remove the cover.
- Loosen the cable clamp securing screws and insert the electrical cable into the cover.
- Connect the electrical wires to the terminal board by either using crimp terminals or by winding the wires around the terminals.
- Fit the cover into the body and secure it by tightening the set screws.
- Tighten the cable clamp securing screws to secure the electrical cable.



Note

1. The relationship between the duct and the terminal board should be as shown in the figure above.
2. If grounding is necessary, connect one wire to the ground terminal.

Mounting a fluorescent lighting fixture

● Securing of the clamp and the fluorescent light plug

< Clamp >

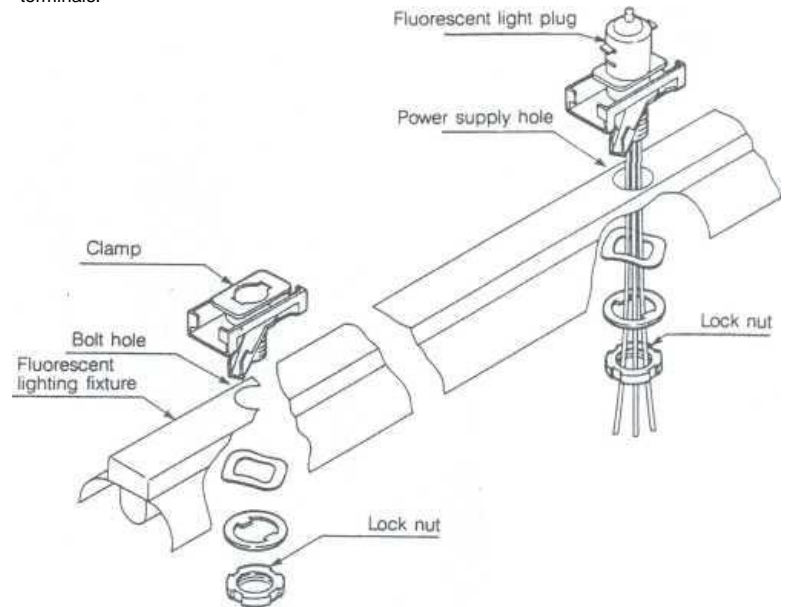
Insert the clamp into the bolt hole in the fluorescent lighting fixture as shown in the figure, then secure it by tightening the lock nut.

< Fluorescent light plug >

Insert the fluorescent light plug into the power supply hole in the fluorescent lighting fixture as shown in the figure, then secure it by tightening the lock nut.

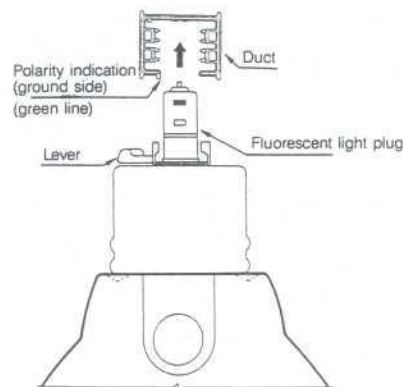
The clamp and the fluorescent light plug are packed together as a set.

If the electrical wires are to be connected to screwless terminals, use bar-shaped crimp terminals.



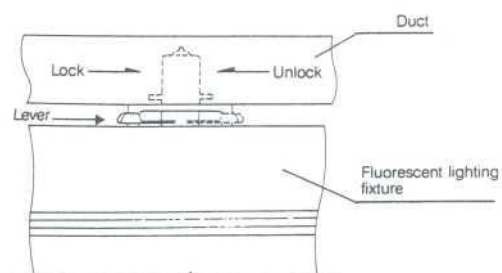
● Mounting the fluorescent lighting fixture to the duct

Insert the levers on the clamp and the fluorescent light plug in agreement with the polarity indication (orange line) on the duct.



● Operation of the levers on the fluorescent light plug and the clamp

Turn the levers to the right to lock. Turn the levers to the left to unlock.



Mounting a duct cover

- Mount the cover by fitting it into the opening in the duct.

